

Sutton Garden Club News

May 2009

website : suttongardenclub.com



The Sutton Garden Club's Annual Plant Sale on the Sutton Common

Saturday, May 16, 2009 9am to 12pm (Rain or Shine)

Your support is needed. Proceeds are to benefit student scholarship fund, sponsoring community activities and bringing beauty to our community with flowers.



Featured Plants for sale include

Helleborus (Royal Heritage) • Toad Lily • Heuchera Purple Palace • Paeonia • Painted Fern

Live Demonstration

At 10 am, Ann McDevitt (National Association of Flower Arrangement Society demonstrator) will be creating a basket arrangement that will be auctioned off.



Plants, Plants, Plants

We need your plants. Year after year, we get people coming back to our event because of the great variety of plants that have been donated. Please plan ahead and try to donate at least a few plants. Drop off your plants in front of the barn at Kari Beaton's house (56 Waters Road, Sutton) any time between May 11 - May 14. Pricing will occur on May 15. Questions, call Kari at 508-865-5900.

Silent Auction

This year we have plan to have an interesting array of offerings including: three months of flowers, basket of gardening tools and voice lessons. Silent auction runs from 9-11:45 am. We are asking each member to donate a garden item that will be bundled together and auctioned off. Items can be dropped off before May 13 on the side porch at Bette Keene's house at 173 Boston Road, Sutton.



Bake Table

We are also looking for your expertise in the kitchen by donating a baked good. Pies, cakes, breads are very popular (brownies have not been a big seller). Please indicate if any of the baked items contain nuts. If you have any questions, please contact Bette (508) 865-2417 or Dale (508) 865-9854.

Crafters

Crafters add interest and complement our plant sale. If you are interested in setting up a table, please contact Deb Oleksy 508-476-7010 or Jeanne Fissette 508-865-6652.

For general plant sale and silent auction questions, please contact Gretchen Soter-Moody gsmoody@charter.net or Minna Rannikko 508-581-9545 mrannikko@yahoo.com.

Victorian Tea

We had an outstanding turnout of 89 guests for the SGC April 21 Victorian Tea Party. The evening started with Ann McDevitt instructing us how to press flowers this summer. The pressed flowers will be used in an upcoming fall program. Examples of Ann's wonderful handiwork with pressed flowers were passed around by Dale Coulter (right) and Jeanne Fissette (left). A big thank you to members, especially Bette Keene and Dale Coulter, for organizing a delightful evening filled with scrumptious treats and teas.



- Do press flowers on a sunny day
- Do label each page with name & date of pressing
- Do press all parts of a flower separately
- Do press all stems on one page
- Do press all leaves on one page
- Do press all petals on one page
- Do try to only put the same size flowers on one page
- Do **NOT** place flowers too close together on page
- When pressing thick flowers e.g. Roses/Carnations, take petals apart and press separately



- Do **NOT** pick flowers on a rainy day
- Do store books in a warm dry place
- Do **NOT** use flower presses with corrugated board inside
- Do **NOT** open book for at least 4 weeks
- Do **NOT** put flowers on shiny paper e.g. Catalogues

Telephone books are ideal with or without blotting paper. Be sure to place a heavy weight on top.

By audience applause, winners of the hat categories were (left to right):



- Sophisticated - Hillary White
- Victorian - Joanne Geneva
- Comical - Deb Olesky
- Originality - Gail Greenleaf
- Team Spirit - Martha Mingolla
- Use of Flowers - Erin Cambella



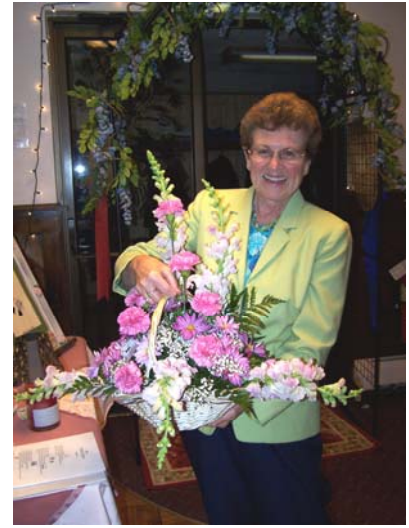
While dressing in actual vintage and authentically reproduced undergarments, clothing and accessories, Kandie Carle provided humorous historical and anecdotal laughs about fashion, home life and etiquette of the late 1800's Victorian age. Through comical impersonations, professional actress Kandie was our guide for the Victorian fashions, home life, societal rules of etiquette and personal adornments. To book Kandie for an event, visit www.kandiecarle.com



A good humored "servant" laces a corset.



Proper Victorian Lady ready for social event with her nosegay.



Flowers won by Mary Boliver. Arrangement donated by (www.flowersfromtheheart-sutton.com)



Had a great time at the Tea Party?? Join us for future events at our new location. . .

*******New SGC Meeting Place*******

After many great meetings at the Sutton Senior Center, we have a new location. New meetings will be held at First Congregational Church of Sutton on Sutton Common. The address is 307 Boston Road, Sutton, MA 01590. Thank you Ann McDevitt for finding us a new place! Further reminders will be in upcoming newsletters.



Sutton Common Band Stand Planting

Planting will occur on Thursday, May 28 at 10 am (rain date is June 2). We are looking for people who are interested in helping to pick up flowers and transportation the week before planting occurs. We are seeking volunteers to sign up for one week during the summer to help water and weed the area. Please contact Cynthia Windle, 508-865-5773, to assist with this community beautification program.



Grilled Tropical Fruit Kabobs

Preparation Time: 20 min

Cooking Time: 7 min

Ingredients

1/4 cup(s) dark brown sugar, packed
2 tbsp unsalted butter
1 tsp ginger root, finely chopped (or more to taste)
1 oz rum, dark-variety
1/2 medium pineapple, peeled and cut into large chunks
2 large mangoes, peeled and cut into large cubes
2 large bananas, peeled and cut into large pieces

Instructions

Combine sugar, butter, ginger and rum in a small saucepan; heat over low heat until well-combined, about 2 to 3 minutes and set aside.

Alternate pieces of fruit on metal skewers; brush with sugar mixture.

Place kabobs on grill or grill pan and cook until grill marks show on bottom side of fruit, about 1 to 2 minutes. Turn kabobs and grill until marks appear on other side, about 1 to 2 minutes more.

Follow the Wall



Before photo

The Great Wall of China was built starting in 5th century BC to provide a secure trade route and as a defense structure. I needed a wall to battle sun, weeds and gravity. We recently had sewer service connected. The sewer pipe was installed through an embankment by Earthworks (Grafton). The embankment was originally grass and difficult to mow. Mulch was added and I tried planting some flowers. However, the embankment is located on the sunny south side. Water ran downhill rather than soaking into the soil. Plants withered and dried during the summer months. Weeds thrived. We decided to have a stone wall put in by Taft Landscaping (Grafton).

The first phase started with the embankment being dug up by Earthworks. The Caledonian granite stairs were delivered by Camosse (Worcester). Each stair was rolled off the delivery truck and leveled exactly into place. Stay tuned for updates on progress. I would really appreciate your ideas on planting and landscaping the area. mrannikko@yahoo.com



Stairs and field stone delivered

Featured Farm

North Forty Farm is growing again. Since opening in 2006, the farm stand has offered consumers a wide variety of fresh, local, organically-raised produce and cut flowers. This year the farm is expanding to include a [CSA](#), a convenient, reasonably priced way to enjoy the farm's delicious produce while also supporting local agriculture. Check out the CSA page at www.northfortyfarm.net for details and how to sign up. Shares are limited and are expected to sell out fast, so don't delay. And for you flower-lovers, a Flower Share is also available, providing an affordable, convenient way to fill your home with the beauty of nature each week



The North Forty Farmstand also has your favorite products from other local producers like peaches, apples, honey, maple syrup, goat's milk soap, and beeswax lip balm. There is also high quality freezer beef, and seasonally we sell pork and lamb, produced by New Beginnings Farm in Townsend. New Beginnings Farm beef is naturally lean, and all animals are raised humanely and using organic practices. Look for meat CSA details in the future.

The Greenough family has lived and worked the land at North Forty Farm since 1969. Sue grows the vegetables, berries and flowers, and runs the farm stand. Kim raises beef, pork, lamb and eggs at nearby New Beginnings Farm. Together, they have also sold their products at local farmer's markets in Groton, Pepperell, Dunstable and Brookline, NH.

North Forty Farm 124 Meadow Road Townsend, MA 01469 Phone: 978-597-6507 sue@northfortyfarm.net

Featured Flower

*In Flanders fields the poppies blow
Between the crosses, row on row,
That mark our place; and in the sky
The larks, still bravely singing, fly
Scarce heard amid the guns below.*

*We are the Dead. Short days ago
We lived, felt dawn, saw sunset glow,
Loved, and were loved, and now we lie
In Flanders Fields.*

*Take up our quarrel with the foe:
To you from failing hands we throw
The torch; be yours to hold it high.
If ye break faith with us who die
We shall not sleep, though poppies grow
In Flanders Fields.*

- John McCrae



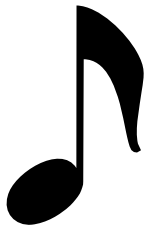
Reminder – May Workshop

May 19, 2009 6:30pm

Bemis Farm Nursery in Spencer



\$15 members
\$29 nonmembers
RSVP by May 8.
Registration form
can be found in
April newsletter.
Any questions,
please call
Janet
508.865.5074



Opera Show

SGC newest member, Mauri Tetrault, will be performing in *The Bartered Bride* at the Cutler Majestic. Show dates are May 1, 3 and 5.

<http://www.operaboston.org/>

East Quabbin Garden Tour

Saturday, June 13 10 am – 4 pm

Join the self-guided celebration and tour of gardens incorporated around small spaces, solar house design and rock gardens. Favorite gardens of the region will include Barre, Petersham and Hardwick. Tickets are \$15. A box lunch will be available at Hartman's Herb Farm – please reserve and prepay an additional \$15 per meal by June 8th. To secure tour tickets, meal tickets and the tour guide brochure, please make checks payable to East Quabbin Land Trust P.O. Box 5 Hardwick, MA 01037. For more information, please visit www.eqgt.org.



Mass Hort and the Garden Club Federation Invite You

Saturday- Sunday, May 30 - 31. Wellesley, MA

Elm Bank will be at its spring glory peak at the end of May. Why not plan to spend a day there enjoying the flowers... indoors and out? You will also be able to view a stunning entry in the flower competition by SGC member Ann McDevitt. That's the idea behind "Open House", a flower show; floral, horticultural and educational displays; and tours of Elm Bank's gardens. Tickets are \$10 in advance and can be ordered by calling 617-932-4995 or through the MassHort website. www.masshort.org.

Calendar of June 2009 Garden Tours in Massachusetts

<http://centersandsquares.com/garden-tours-in-massachusetts/>

Hidden Gardens of Beacon Hill Boston. Thursday, May 21, 2009. 9 a.m. to 5 p.m.

Lexington Garden Tour. Saturday, June 6, 2009

Carlisle Country Gardens Tour. Friday and Saturday, June 12 and 13. 10 a.m. to 4 p.m.

Newburyport Garden Tour. 30th Annual Garden Tour. Saturday and Sunday, June 13 and 14.

Gardens of Charlestown Saturday, June 20

Dennis Garden Tour. Saturday, June 27, 2009. 9:30 a.m. to 3:30 p.m.

Secret Gardens of Squantum. Quincy, Saturday, June 27, 2009. 10:30 a.m. to 3 p.m.

Weymouth Garden Tour. Sunday, June 28, 2009

South End Garden Tour. Boston. Saturday, June 20, 2009. 10 a.m. to 4 p.m.

Amherst Garden Tour. Saturday, June 27, 2009. 10 a.m. to 4 p.m.

Plymouth House & Garden Tour. Saturday, June 27, 2009.



Sutton Garden Club Membership 2009/2010



We wish to encourage interest in all phases of gardening and promote better horticultural practices.

To use the acquired skills and knowledge of the membership to benefit our town and residents through community projects and promote a spirit of good will.

Last Name _____ First Name _____

Street Address _____ City _____

Zip Code _____ Date _____ Home Telephone _____

E Mail Address _____ Cell Phone _____

We have offered enjoyable programs and would like to hear your ideas for fresh new programs.

OFFICERS (please check position of interest)

____ SHARING PRESIDENT AND VICE PRESIDENT OFFICE

____ OFFICER: NEWSLETTER, MEMBERSHIP TREASURER, SECRETARY, PUBLICITY

COMMITTEES (please check 2 or more)

____ BANDSTAND LANDSCAPING DESIGN AND WATERING COMMITTEE

____ PLANT SALE COMMITTEE CHAIRMAN

____ PLANT SALE COMMITTEE

____ SCHOLARSHIP COMMITTEE

____ WREATH CONTEST COMMITTEE

____ REFRESHMENT COMMITTEE

____ CHRISTMAS DECORATING BANDSTAND COMMITTEE

____ PROGRAM PLANNING & PROGRAM BOOKLET 2010/2011 COMMITTEE



DUES: \$20.00, Family \$30. Please pay by JUNE 16, 2009. Checks payable to Sutton Garden Club

Please mail entire page to Dee Swatik, 25 Grace Ave. Sutton, MA. 01590 508-865-3626

May Membership Drive 2009-2010

This year we have decided to have a deadline for membership. Please renew before June 16, 2009. Please take a few minutes to fill out your membership renewal form. This will allow Garden Club a head start on planning next year's activities.

Each year we look to new Leadership. We need Officers to guide and provide direction for the many who signed up to be Volunteers for various tasks.

When you filling out your membership form please remember, someone has to guide the Business of Garden Club. Printed membership forms will be available at:
www.suttongardenclubtyepad.com, Plant sale and in our current newsletter.

Thank You

Dee Swatik

Membership Chairman



Sutton Garden Club
c/o Smith
40 Joe Jenny Road
Oxford, MA 01540

May 2009 newsletter